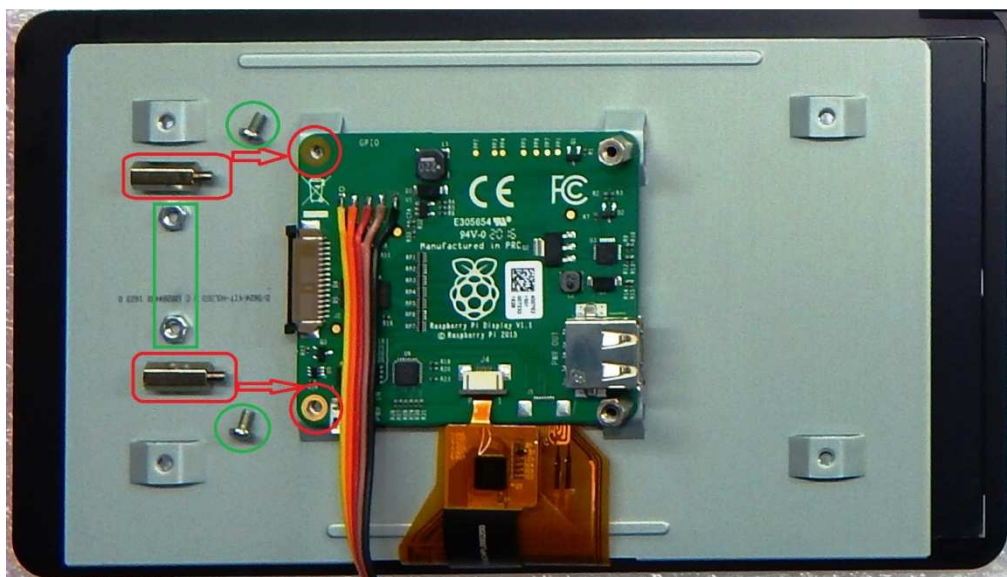


PiHPSDR CONTROLLER ASSEMBLY MANUAL

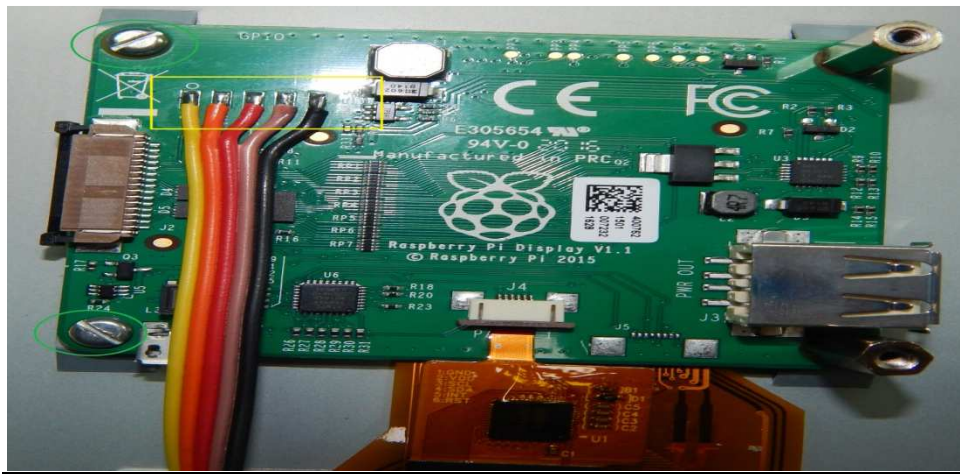
Please note that you will have to create a bootable MicroSD card and install it in your Pi before proceeding with the hardware assembly, it is assumed that you know how to do this, instructions are available on the raspberrypi.org website.



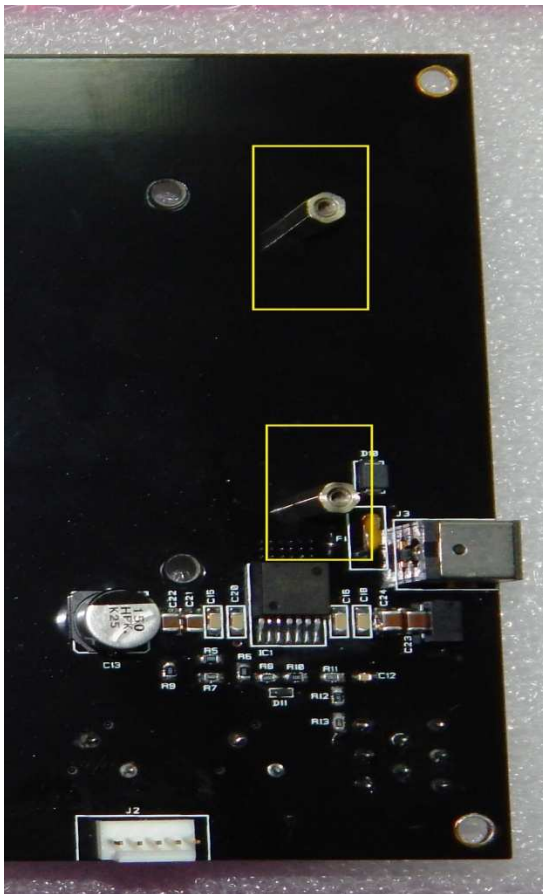
Contents of the Rpi and the official Rpi 7 inch screen kit



Please remove the two spacers as shown above and replace with the supplied screws



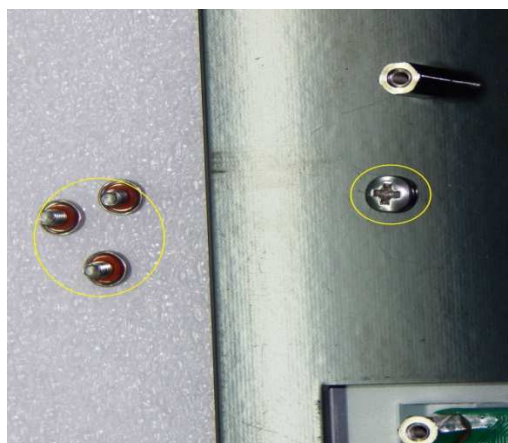
De solder the 5 pin header and solder the 5 pin ribbon cable as shown above



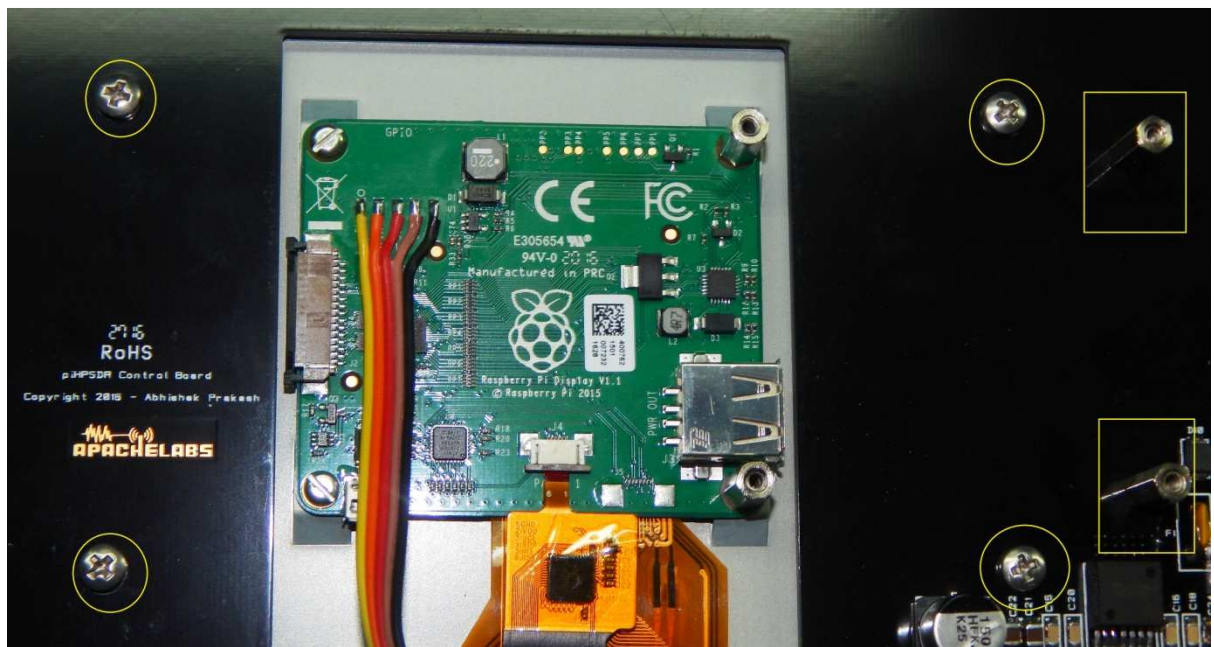
Fix the two spacers removed earlier from the Screen PCB and secure on to the Controller PCB with nuts (Supplied with the kit) as shown above



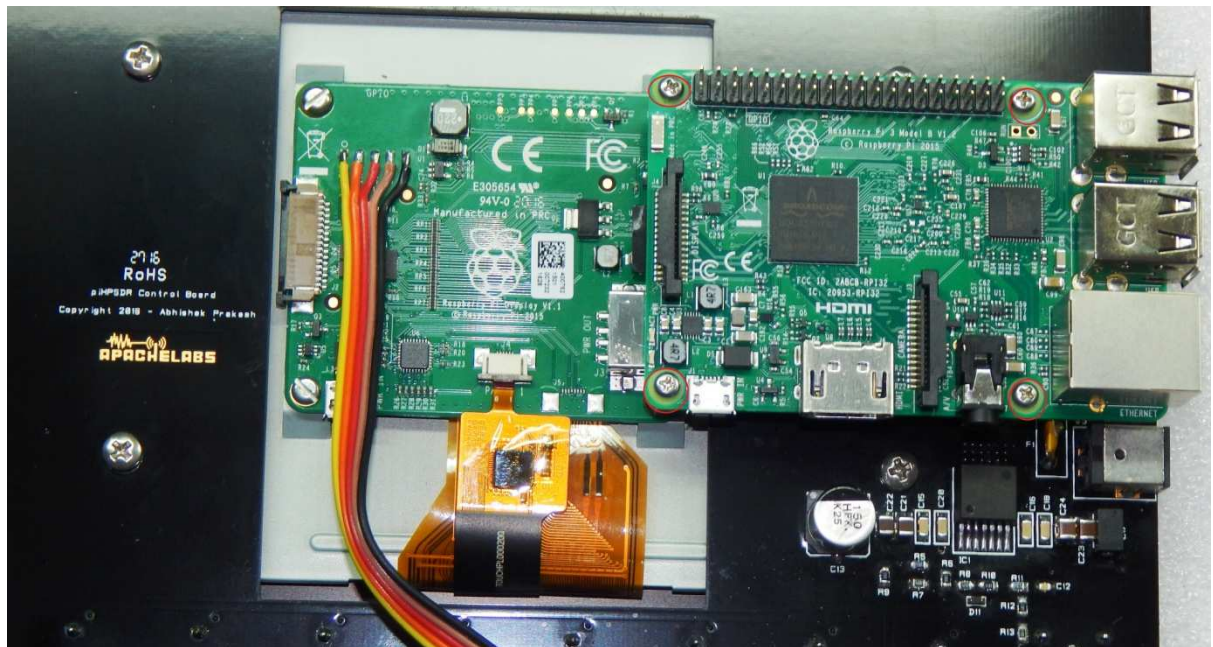
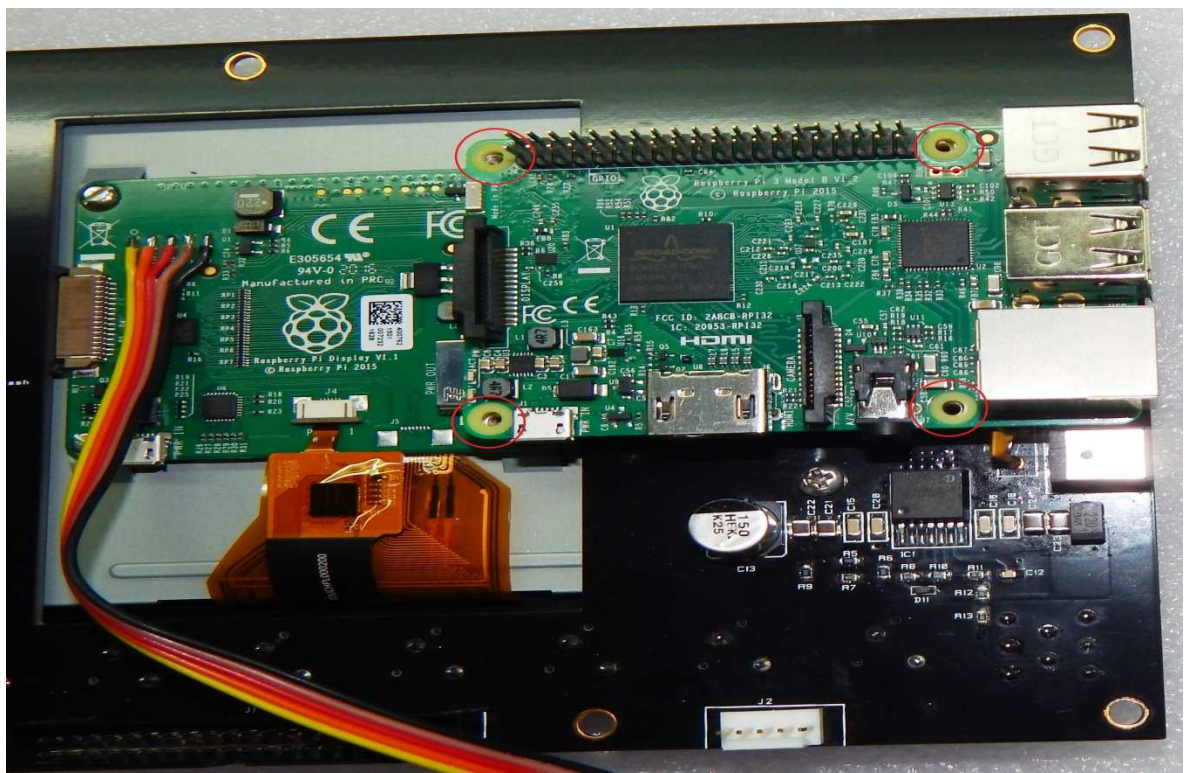
Your 5 pin cable assembly should look like this once soldered



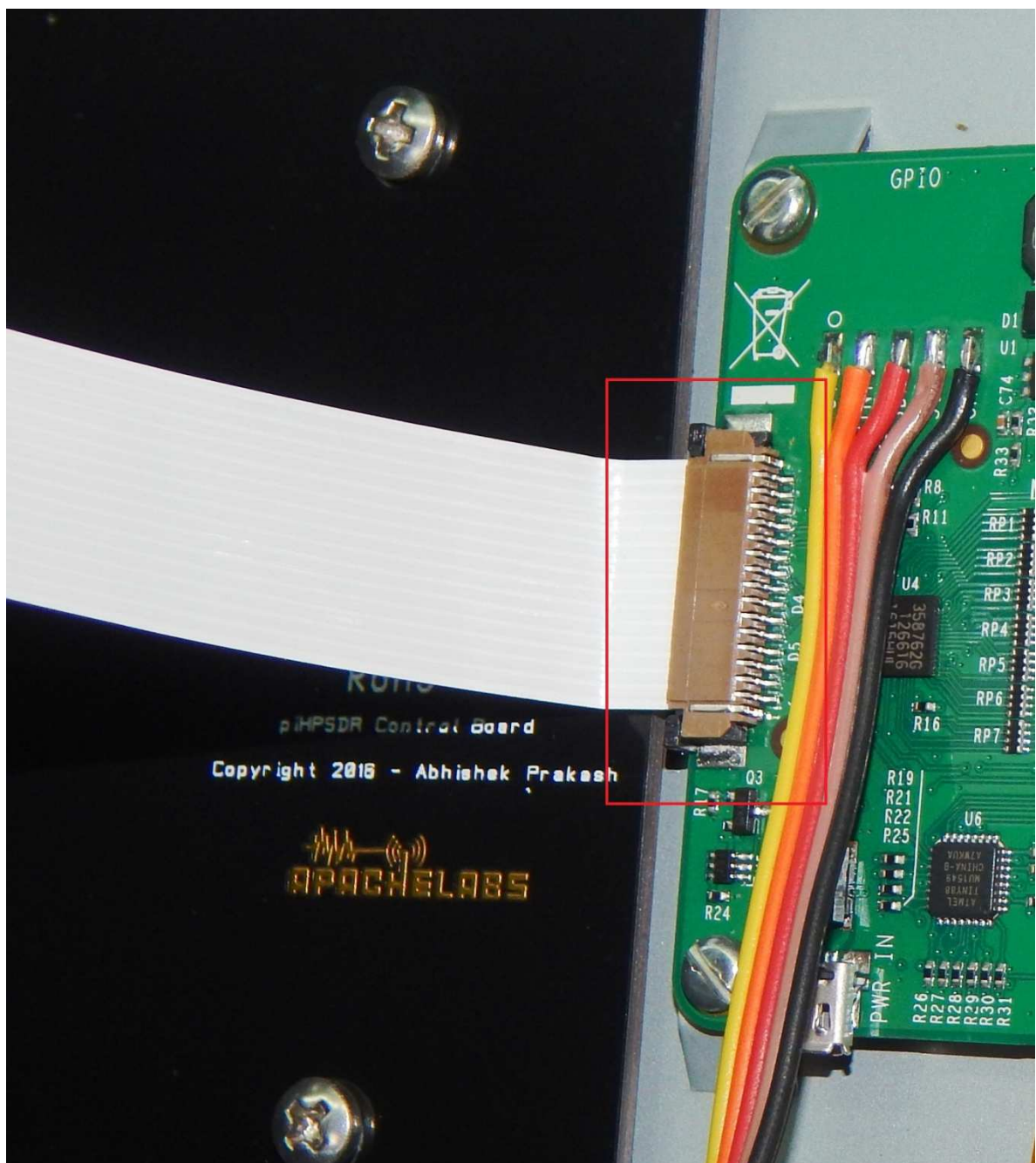
There are four Philips head screws supplied with the kit



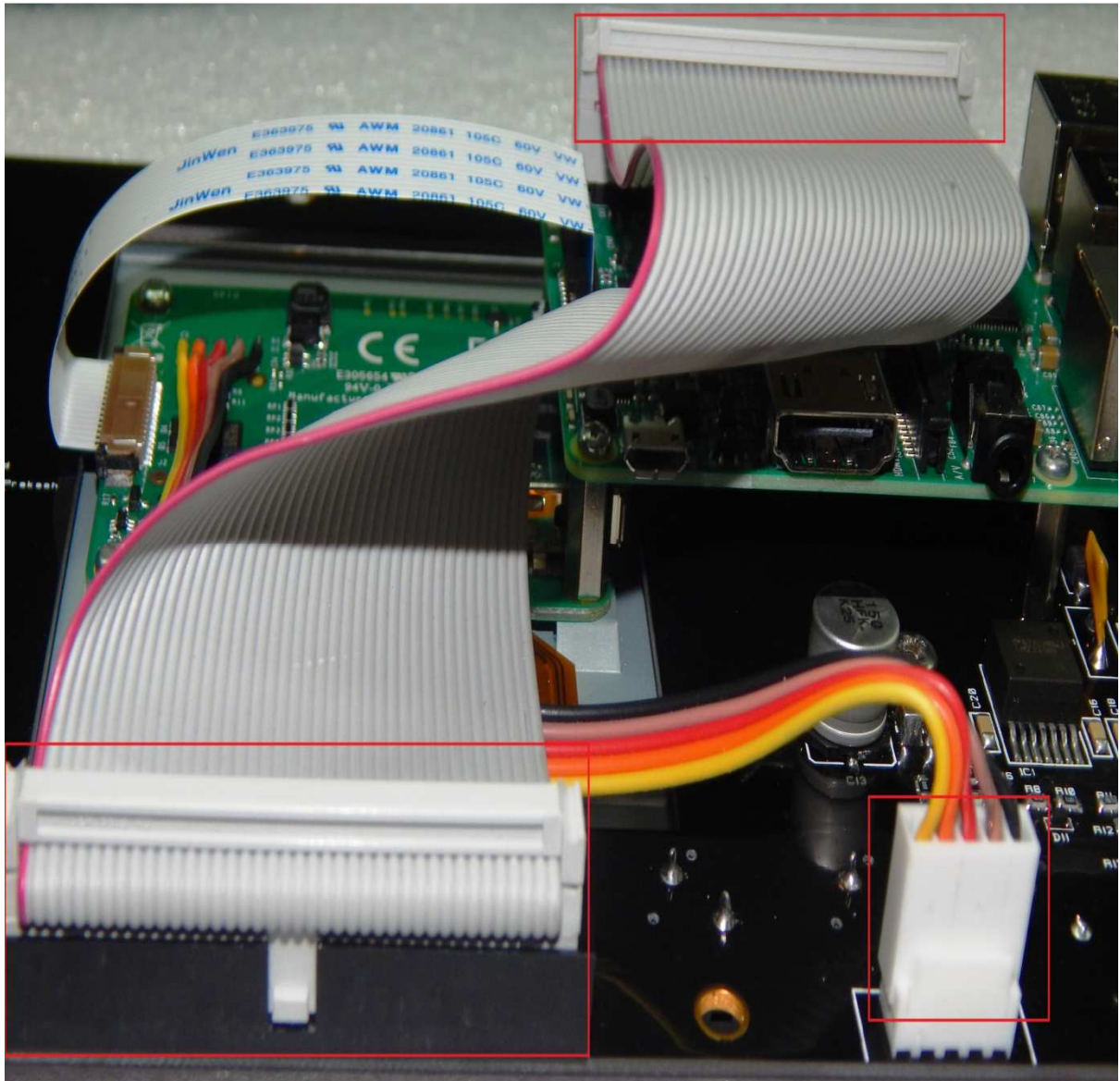
Use the above screws to fix the screen on to the controller PCB, ensure orientation is as above



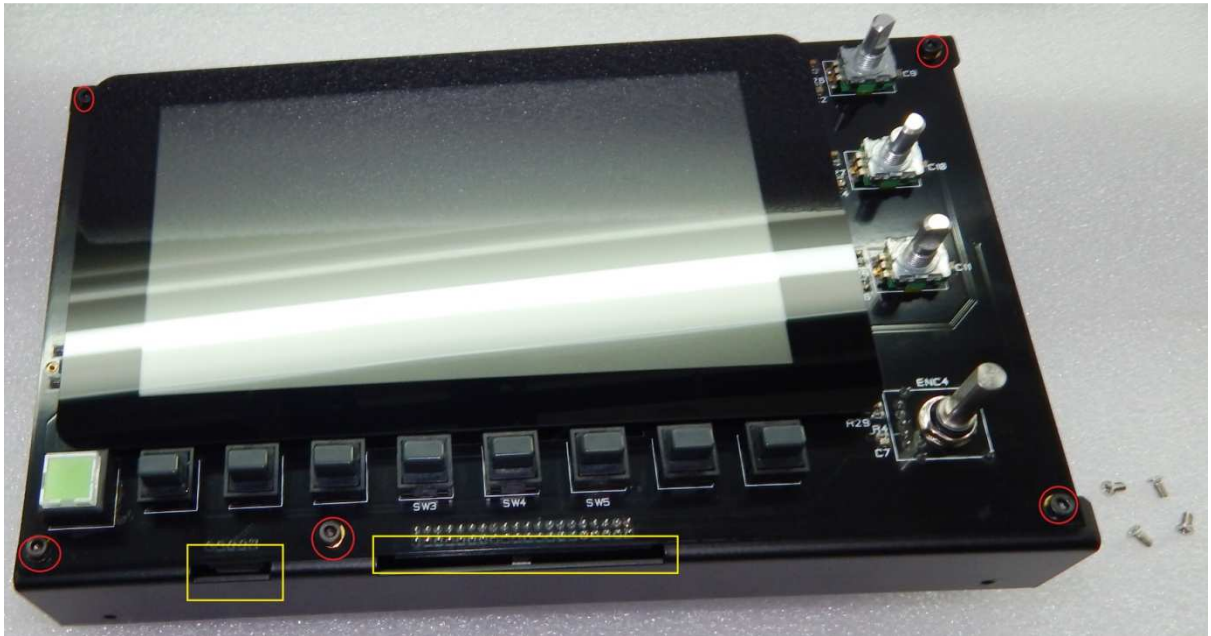
Once the screen and the controller pcb are secured, place the Rpi on the four spacers and screw on the four screws supplied with the Rpi kit.



Now connect the Display flex cable as shown above to the Display PCB and the Pi



Connect the 40pin IDC cable to the controller PCB and Pi observing polarity (red strip) as above



Place the assembled Kit on the Controller back chassis as above an screw the Hex nuts

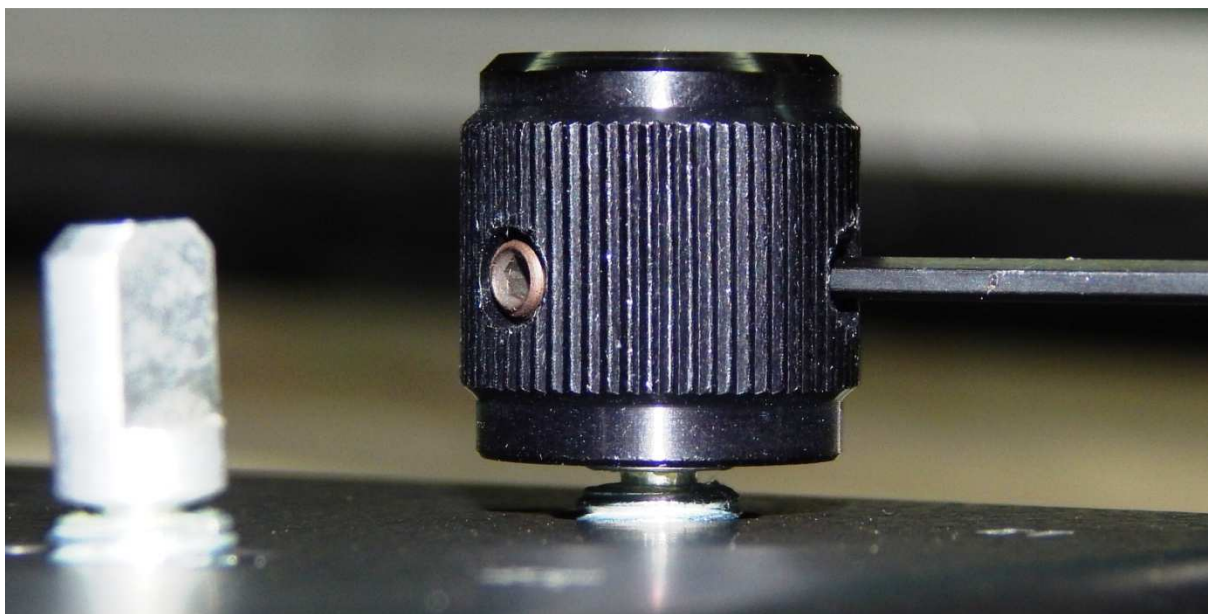


Remove the plastic protection film from the display

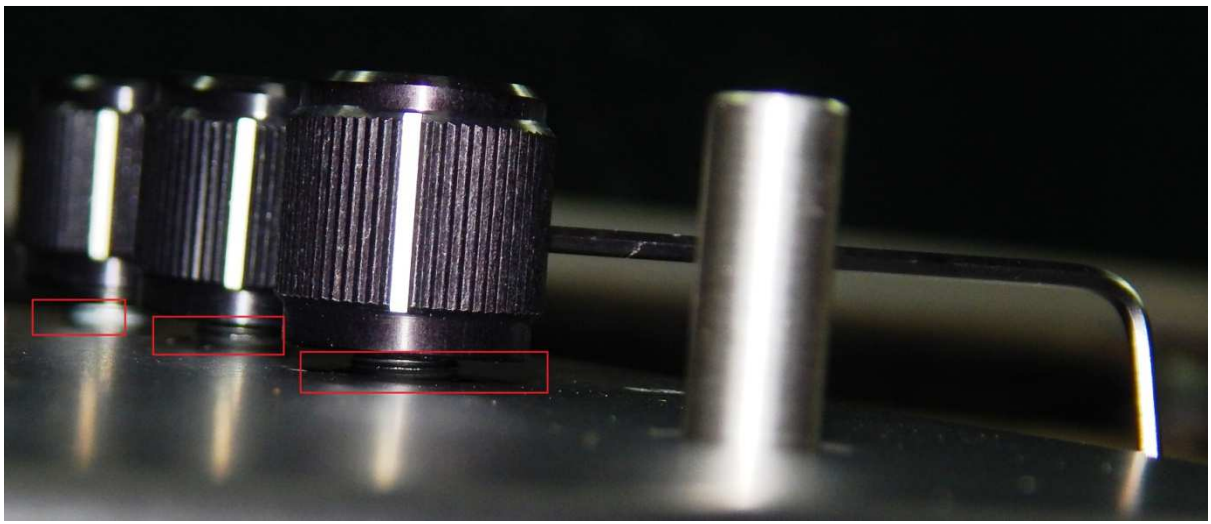




Place the top cover and screw on the front panel screws



Place the E1/E2/E3 knobs on the encoders



Ensure adequate spacing between the panel and knob since the knobs also function as push button switches



Finally Secure the tuning knob



Your kit is assembled, congratulations! Power it on using the supplied cable and a 12v DC supply